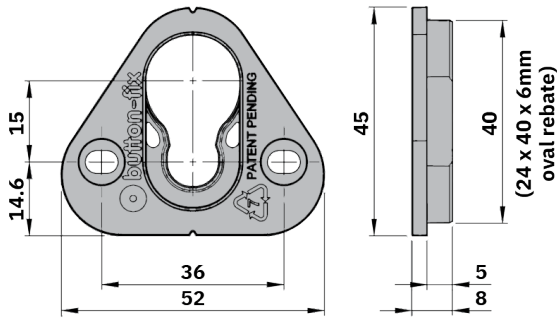
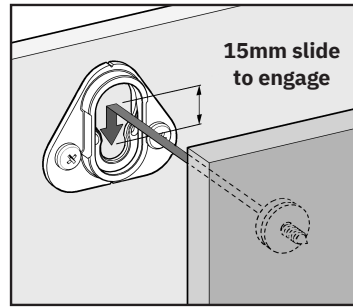


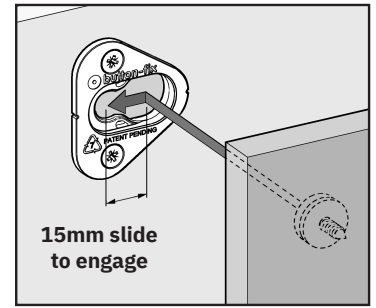
Type 1



Material = **Nylon PA6, 30% glass filled** (for strength)
Wall panel with 4 x Fixes, guide load = **200 kg** max. (1)
Ceiling panel with 4 x Fixes, guide load = **110 kg** max. (2)

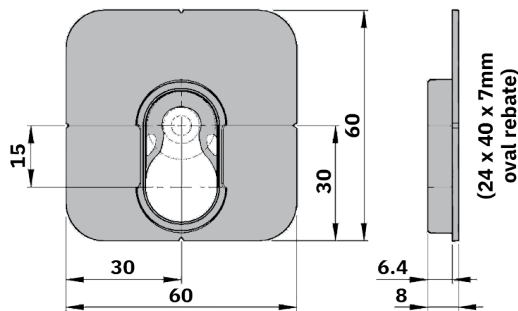


Surface-mounted installation
Orientated for downwards assembly
Panel gap = **8mm**
Screws = **Ø5mm pan head**

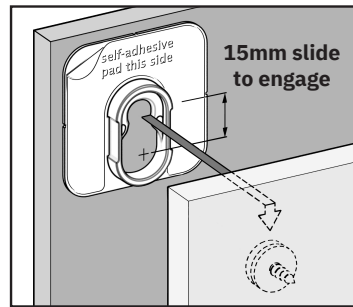


Semi-rebated installation
Orientated for sideways assembly
Panel gap = **3mm**
Screws = **Ø4.5mm CSK**

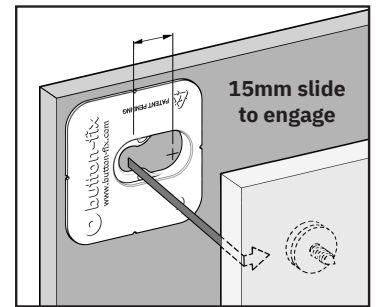
Type 1 Bonded



Material = **ABS** (for compatibility with many adhesives)
Wall panel with 4 x Fixes, guide load = **80 kg** max. (3)
Ceiling panel with 4 x Fixes, guide load = **80 kg** max. (3)
Self-adhesive Fix-pads available for light-duty applications

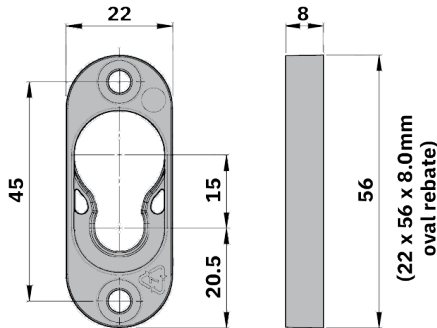


Surface-mounted installation
Orientated for downwards assembly
Panel gap = **8mm** approx.
Max. load (Fix-pad) = **2 kg** per Fix

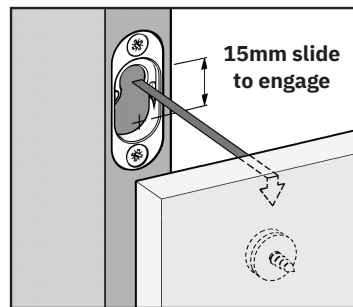


Semi-rebated installation
Orientated for sideways assembly
Panel gap = **3mm** approx.
Max. load (Fix-pad) = **20 kg** per Fix

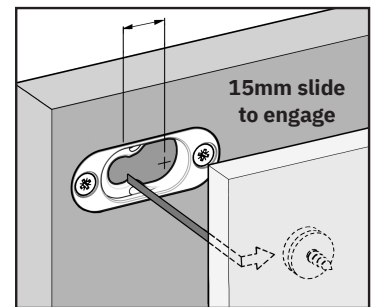
Type 1 Flush



Material = **Nylon PA6, 30% glass filled** (for strength)
Wall panel with 4 x Fixes, guide load = **100 kg** max. (1)
Ceiling panel with 4 x Fixes, guide load = **100 kg** max. (based on a surface-mounted installation)(4)

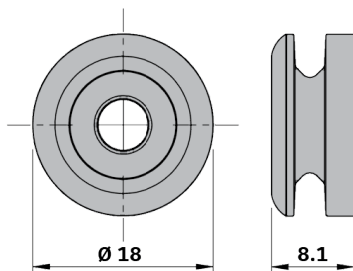


Rebated into the **edge** of a panel
Orientated for downwards assembly
Minimum panel thickness = **28mm**
Screws = **Ø4.5mm CSK**

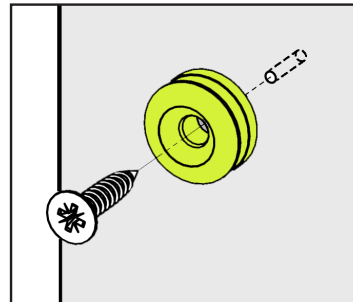


Rebated into the **face** of a panel
Orientated for sideways assembly
Minimum panel thickness = **19mm**
Screws = **Ø4.5mm CSK**

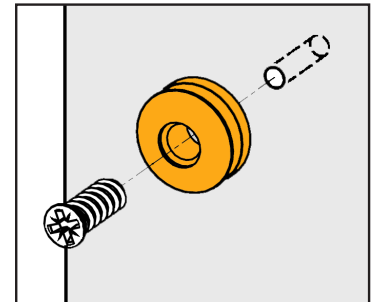
Type 1 Buttons



Material = **Nylon PA6, 30% glass filled** (for strength)
For use with Type 1, Type 1 Bonded and Type 1 Flush Fixes



Lime green Button for wood screws
Screws = **Ø5mm CSK**

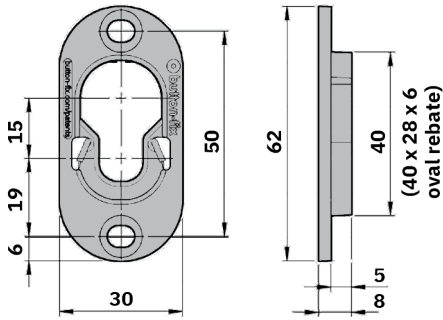


Orange Button for Euro screws
Screws = **Ø6.2mm Varianta 5** (to fit Ø5mm pilot hole)

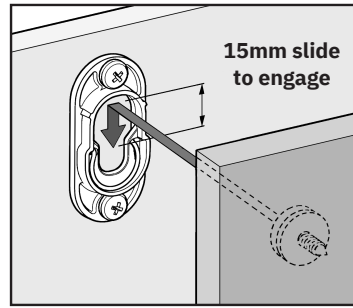
All Button-fix products are made in the UK
Any questions? Email technical@button-fix.com

Technical information: dimensions, materials & guide loads

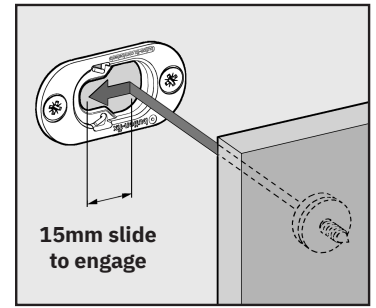
Type 1 Metal



Material = **ZL2 zinc alloy** + 316 stainless-steel spring
 Wall panel with 4 x Fixes, guide load = **350 kg** max. (1)
 Ceiling panel with 4 x Fixes, guide load = **230 kg** max. (2)
 Matching zinc Button same dimensions as Type 1 Button

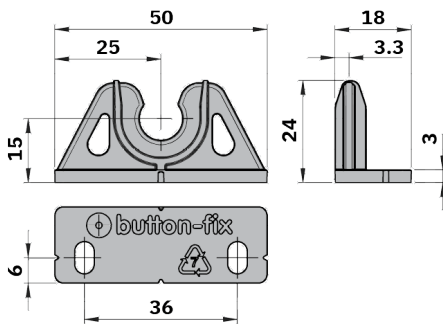


Surface-mounted installation
 Orientated for downwards assembly
 Panel gap = **8mm**
 Screws = **Ø5mm pan head**

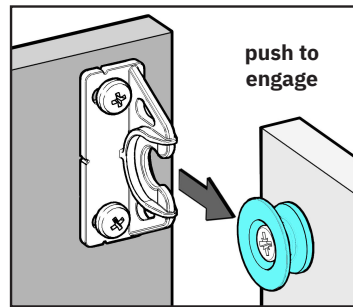


Semi-rebated installation
 Orientated for sideways assembly
 Panel gap = **3mm**
 Screws = **Ø5mm CSK**

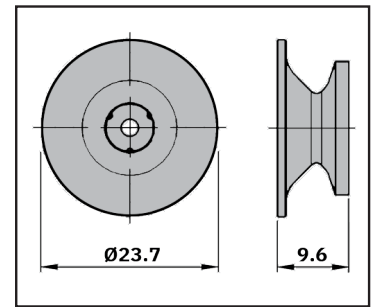
Type 2



Material = **DuPont Zytel® nylon 66** (for durability)
 Wall panel with 4 x Fixes, guide load = **50 kg** max. (1)
Never use Type 2 on ceiling panels
 Disengagement force (for a single Fix) = **7 kg**

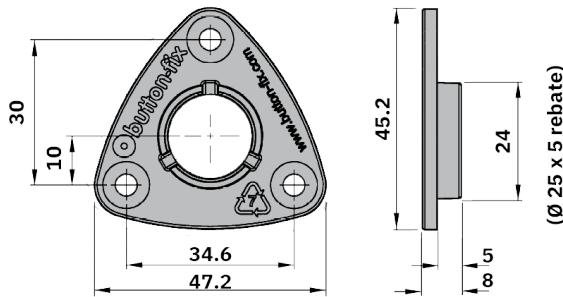


Push on/pull off engagement
 90° connection to a frame or cabinet side panel
 Screws = **Ø4.5mm pan head**

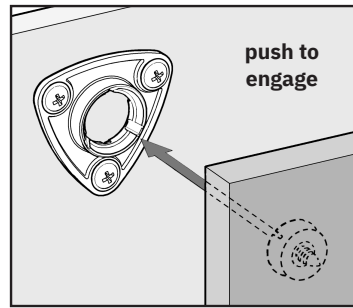


Type 2 Button dimensions
 Material = **Nylon PA6**
 Screws = **Ø5mm CSK**
 (also Ø6.2mm Varianta 5 Euro screw)

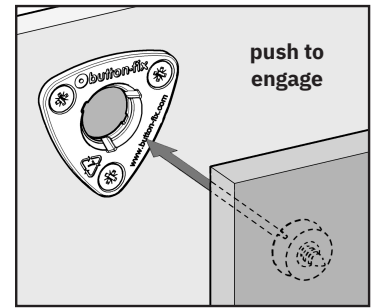
Type 3



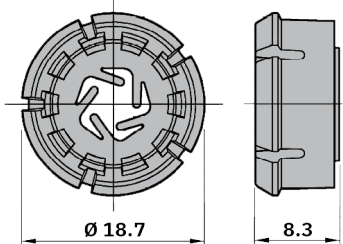
Material = **PBT** (for strength and durability)
 Wall panel with 4 x Fixes, guide load = **60 kg** max. (1)
 Ceiling panel with 4 x Fixes, guide load = **10 kg** max. (5)
 Disengagement force (for a single Fix) = **14 kg**



Surface-mounted installation
 Push on/pull off engagement
 Panel gap = **8mm**
 Screws = **Ø4.5mm pan head**



Semi-rebated installation
 Push on/pull off engagement
 Panel gap = **3mm**
 Screws = **Ø4.5mm CSK**



Type 3 Button dimensions
 Material = **Acetal**
 Screws = **#8/Ø4.2mm flange head**

Email: technical@button-fix.com

Footnotes

- (1) Advice on panel loads is given with the proviso that the screws and substrate are properly matched, and all other instructions complied with. For critical applications it is essential to perform your own tests.
- (2) Advice is based on independent load tests with Button-fix attached to 18mm MDF or plywood. Allowances should be made when using different panels. Independent test reports can be found on our website: button-fix.com/technical-resources
- (3) For Type 1 Bonded, always follow the adhesive manufacturer's recommendations on substrate suitability, preparations and loadings, and perform your own tests as necessary.
- (4) When using Type 1 Flush rebated into a ceiling panel, allowances should be made for the shorter effective length of the screws and their reduced pull-out strength.
- (5) The guide load for using Type 3 on ceiling panels should be applied to any panel that is not vertical and its weight acts to disengage the Button-fix.